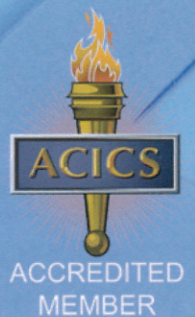




**SHORT TERM
INVESTMENT.
LONG TERM
SUCCESS.**



**SOUTHERN STATES
UNIVERSITY**

WWW.SSU.EDU



INTENSIVE ENGLISH PROGRAM (IEP)

Immerse yourself in the English language and quickly improve your comprehension and speaking abilities with SSU's Intensive English Program (IEP). With the English skills learned while at SSU, you will become a valuable asset in local and global business, while increasing your network of social and professional contacts.

ADVANTAGES OF STUDYING IN SSU:

- Highly qualified English language instructors;
- Enhanced cultural awareness comes from a diverse student population;
- Open-enrollment allows students to begin classes on any Monday throughout the year;
- Students are taught how to apply English language skills to personal, academic and professional settings.

- Speaking, writing, listening, and reading skills are improved while vocabulary is introduced in topic classes such as Business English.
- A Verification of Participation is given at the completion of each level.

CURRICULUM

Consists of core and topic classes ranging from Beginner to Advanced, TOEFL Preparation classes and Advanced Business Skills Development.

PROFESSIONAL PROGRAMS

Southern States University offers professional programs to enhance or launch you into a new and exciting career. Each course lasts four weeks. Students will be awarded a "Certificate of Completion" for successfully completing a course.

MARKETING

Students develop an understanding of key issues and trends in marketing strategy.

ENTREPRENEURSHIP

Provides practical insight with business materials to explore the entrepreneurship world.

BUSINESS LAW

Presents an overview of legal, ethical and regulatory issues that affect business operations.

OPERATIONS MANAGEMENT

Provides a solid foundation of the tools in operations management.

STRATEGIC MANAGEMENT

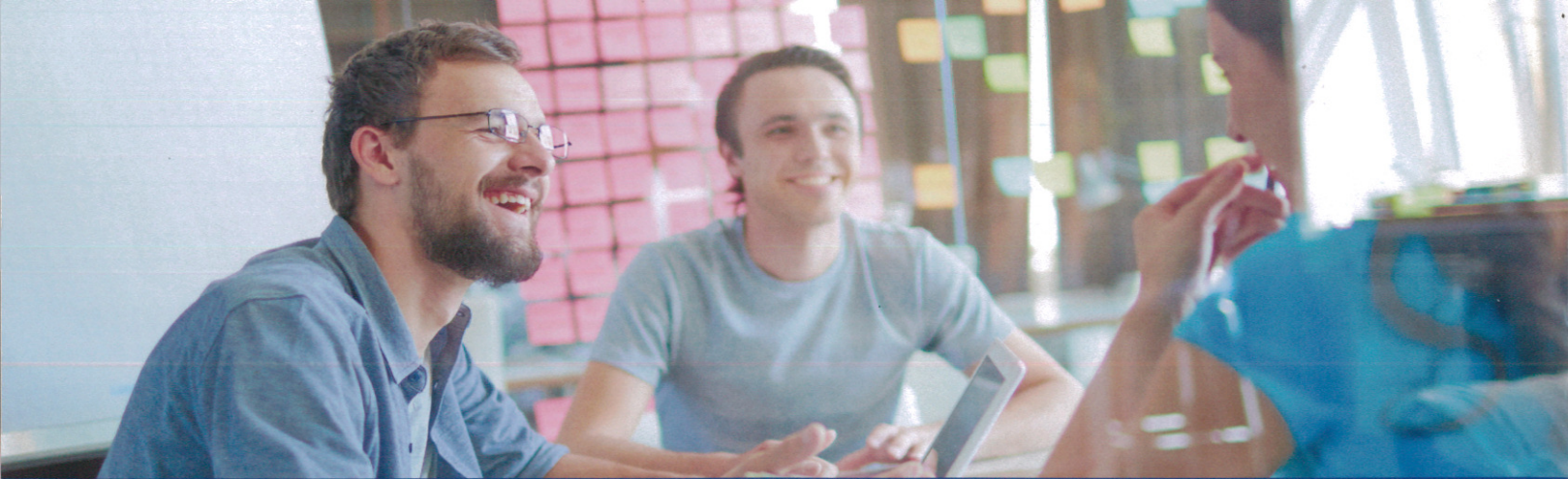
Builds a broad view of the key concepts and principles of strategy formulation with useful analytical skills.

PUBLIC SPEAKING

Develops an introduction to speech communication, which emphasizes the practical skill of public speaking.

For more information about the IEP and the Professional Program, please visit: www.ssu.edu

Note: The IEP and Professional Program are non-credit short-term programs.



MASTER OF SCIENCE IN INFORMATION TECHNOLOGY (MSIT)

Get a jump start on your road to success in the professional world with a Master of Science in Information Technology (MSIT) degree at SSU. This two-year program provides students with an enriching and stimulating academic experience, as well as extensive hands-on exposure necessary to succeed in today's challenging IT world.

- A two-year program that prepares students in the field of information technology.
- With its emphasis on providing a solid academic and theoretical foundation combined with modern IT skills, the program is structured to ensure its students acquire an in-depth understanding of the IT field, as well as the technical skills required to cope with the ever-increasing complexity of IT issues in the modern world.
- In consideration of students' tight schedules and responsibilities, SSU's IT courses are offered during weekday evenings and Saturday mornings and afternoons.

For a description of classes that comprise the Graduate Certificates and MSIT programs, visit the SSU website at www.ssu.edu and click on Academics > Courses and Programs.

MASTERS OF BUSINESS ADMINISTRATION (MBA)

At Southern States University, we recognize that the global business environment is constantly evolving. Constant evolution demands that multi-national and international companies' senior managers and executives possess state-of-the-art business and management skills. Managers and executives will only be able to cope with complex worldwide business activities with the knowledge and understanding of global economics. Graduates of SSU's Master of Business Administration (MBA) program gain the knowledge and skills necessary to progress and promote their advancement on the corporate fast track.

- SSU's MBA program is also designed to enhance the qualifications and experience of those already in the business world, recognizing that senior managers and company executives are responsible for addressing the complicated global issues facing small businesses, health care, government, and non-profit organizations.
- SSU's in-depth program focuses on providing these individuals with the latest management concepts and business applications to enable them to successfully address complex business and management issues from a global perspective.
- Combining theory and case studies with real-life business applications, SSU's coursework is structured to meet the special needs and tight work schedules of mid-level and senior executives. The MBA program delivers the latest management concepts and business applications by combining theory with real-life cases studies, providing students with a broad-based, yet in-depth graduate education.

For a description of classes that comprise the MBA, visit the SSU website at www.ssu.edu and click on Academics > Courses and Programs.



BUSINESS CERTIFICATES (UNDERGRADUATE LEVEL)

Southern States University offers Business Certificates (Undergraduate level) to enhance or launch you into a new and exciting career. Each certificate lasts one year.

CERTIFICATE IN BUSINESS ANALYSIS

Provides knowledge to understand and assist in the implementation of business data analysis.

CERTIFICATE IN FINANCE

Provides the knowledge and skills to begin a career that demands financial and accounting abilities.

CERTIFICATE IN MANAGEMENT STUDIES

Gives students a foundation in management to succeed in today's competitive business environment.

CERTIFICATE IN BUSINESS COMMUNICATIONS

Provides knowledge and skills to begin a career that demands effective communication abilities.

CERTIFICATE IN MARKETING

Students develop the ability to understand and assist in the implementation of marketing plans and tactics.

BUSINESS CERTIFICATES (GRADUATE LEVEL)

Southern States University offers Certificates (Graduate level) to enhance or launch you into a new and exciting career. Each certificate lasts one year.

CERTIFICATE IN STRATEGIC MANAGEMENT

A one-year program designed to guide students into several functional areas of management that complement the study of strategic management.

CERTIFICATE IN BUSINESS ADMINISTRATION

A one-year program designed to afford students the ability to develop the skills necessary to take on the many challenges present in this constantly evolving field.

CERTIFICATE IN INFORMATION TECHNOLOGY

Students who join this program should expect to acquire the core knowledge and skills needed to understand and assist in the development and management of IT systems.



BACHELOR OF BUSINESS ADMINISTRATION (BBA)

Get a jump start on your road to financial success in the business world with a Bachelor of Business Administration degree at SSU. This four-year program provides students with an enriching and stimulating academic experience, as well as extensive hands-on exposure necessary to succeed in today's challenging business marketplace.

ADVANTAGES OF BBA AT SSU

- A well-rounded business administration education with solid business fundamentals, principles, and experience;
- The degree is completed by earning 180 quarter credits;
- The BBA degree gives students a strong academic foundation through general education and prerequisite courses combined with upper division courses designed to be on the cutting edge of today's business needs.
- For students wishing to pursue an advanced business degree after completing the BBA program, SSU also offers a Master of Business Administration (MBA) program.



For a description of classes that comprise the BBA and Business Certificates programs, visit the SSU website at www.ssu.edu and click on Academics > Courses and Programs.



MISSION STATEMENT

Southern States University's mission is to offer competitive and professionally-recognized academic degree and certificate programs, to serve a culturally diverse student community, and to facilitate international awareness amongst our students. We are committed to improving our students' career options and opportunities, and will accomplish this by delivering cutting-edge content, teaching both the fundamental and advanced skills needed to succeed in today's competitive marketplace.

ACCREDITED BY THE ACCREDITING COUNCIL FOR INDEPENDENT COLLEGES AND SCHOOLS

OUR LOCATIONS

SSU has campuses in some of the most beautiful locations in Southern California. Our San Diego locations are close to the beautiful beaches of the Pacific Ocean, known for their breathtaking sunsets and gorgeous views. Our campus in the Newport Beach area lies near prime dining, shopping and entertainment destinations. Sea World, Disneyland, Universal Studios, Hollywood and other major attractions are only a short car ride away.

* SAN DIEGO

+1 (619) 298-1829
123 Camino de la Reina, Suite 100 East
San Diego, CA, 92108

LA JOLLA

+1 (858) 453-8185
3252 Holiday Court, Suite 111
La Jolla, CA 92037

PACIFIC BEACH

+1 (858) 581-3969
919 Garnet Avenue, Suite 216
San Diego, CA 92109

NEWPORT BEACH

+1 (949) 833-8868
1601 Dove Street, Suite 105
Newport Beach, CA 92660

info@ssu.edu

*The managing campus for the IEP and Professional Program is located at:
123 Camino de La Reina Suite 100 East
San Diego, CA 92108