

SOUTHERN STATES UNIVERSITY

SAN DIEGO (FASHION VALLEY, LA JOLLA, PACIFIC BEACH)
NEWPORT BEACH, AND LAS VEGAS CAMPUSES

STUDENT GUIDE FOR INTENSIVE ENGLISH PROGRAM

School Locations:

San Diego Campus

Fashion Valley

123 Camino de la
Reina
Suite 100 East
San Diego, CA 92108

Phone: (619) 298-1829

San Diego Campus

La Jolla

3252 Holiday Court
Suite 116
La Jolla, CA 92037

Phone: (858) 453-8185

San Diego Campus

Pacific Beach

919 Garnet Ave
Suite 216
San Diego, CA
92109

(858) 581-3969

Newport Beach Campus

1601 Dove Street
Suite 105
Newport Beach, CA
92660
(949) 833-8868

Las Vegas Campus

3100 W Sahara Ave
Suite 108
Las Vegas, NV 89102
(702) 383-4099



TABLE OF CONTENTS

Overview	3
Campuses Locations	4-5
SSU English Program	6
Optional Services	8
Application Process and Procedures	8-9
Contact Information	10

OVERVIEW

Southern States University (SSU) was founded in 1983 and several years ago established an Intensive English Program (IEP) with the mission of providing non-native speakers with English language instruction of the highest quality in order to help them read, write, speak and understand English at increasing levels of proficiency. SSU offers all levels of English instruction, ABSD (Applied Business Skills Development) as well as a TOEFL preparation course. Classes are offered in the mornings and all classes are led by trained English teachers.

SSU's pedagogical approach gives students the opportunity to develop a comprehensive set of English language proficiencies, by helping them with the necessary skills involved in the areas of reading, writing, grammar, conversation, and pronunciation. In addition, SSU offers a preparation course for specialized testing including the TOEFL.

Of course, Southern States University also offers excellent Certificate, Bachelor of Business Administration and Master of Business Administration programs. For those who are interested in pursuing careers in business of any sort, SSU is a great place to study. Degree program students at SSU study today's most relevant business topics, including entrepreneurship, international business, finance, and marketing. All courses are led by professors with real-world knowledge and some level of success in their discipline and a variety of courses include hands on experience. A high level of English fluency is required for these programs, and the SSU IEP can prepare you for it quickly. SSU's fun, challenging and productive learning environment is well-suited to prepare students for success in their future personal, academic, and professional pursuits.

SSU's Approval and Accreditation Status is as follows:

- SSU is approved by the *California Bureau for Private Postsecondary Education (BPPE)*, which has some of the most rigorous approval standards of any state in the US.
- In the state of Nevada, the Intensive English Program (IEP) courses are accredited by ACICS but they are not licensed by the State of Nevada as they are not under the jurisdiction of the Commission on Postsecondary Education
- SSU is accredited by the *Accrediting Council for Independent Colleges and Schools (ACICS)*, an organization that is internationally recognized for demanding high quality standards to be admitted.
- This school is authorized under Federal law to enroll nonimmigrant alien students.

SSU's campuses are located in two of California's most beautiful and glamorous areas, San Diego and Orange Counties, both of which are ideal locations to live and study. SSU also has a campus in Las Vegas, Nevada. Recreational opportunities abound, all within a few miles of SSU's dynamic campuses, including:

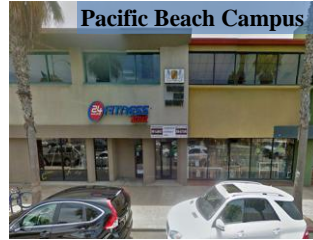
- gorgeous beaches, mountains, and deserts
- high fashion shopping areas
- delicious restaurants and exciting nightclubs
- world renowned amusement parks and attractions

A temperate, dry, climate enables year-round enjoyment of such outdoor activities as hiking, biking, surfing, boating and skating. Of course, Disneyland, Universal Studios, Hollywood, the San Diego Zoo and Sea World are nearby as well. SSU will help you to see them all, including school trips to explore the area's most interesting cultural spots!



CAMPUSES LOCATIONS

Our campuses are located in 4 of the most popular areas of Southern California:



San Diego-Fashion Valley – Southern States University - SSU is facing the largest Shopping Center in San Diego and has plenty of parking. The campus is centrally located surrounded by hotels, restaurants, movie theaters, stores, trolley, buses and has easy access to all freeways and Downtown San Diego. This campus also offers Undergraduate, Graduate and Certificate Programs in the Business Administration field.

San Diego-La Jolla (Spanish for “the jewel”) is centrally located on the beautiful San Diego coastline and is a peaceful area filled with luxury homes, art galleries, exclusive restaurants and many other upscale nightlife options. The campus is just minutes from a popular shopping mall and downtown La Jolla, as well as being walking distance from the University of California San Diego, a movie theater and the bus stop. A computer lounge, study room and private courtyard available to students make this academic environment a place where true learning can thrive in an elegant and beautiful setting.

San Diego-Pacific Beach is a neighborhood in San Diego, bounded by La Jolla to the north, Mission Beach and Mission Bay to the south, Interstate 5 to the east and the Pacific Ocean to the west. While formerly largely populated by young people, surfers, and college students. "P.B.," as it is known as by local residents, is home to one of San Diego's more developed nightlife scenes, with a great variety of bars, eateries, and clothing stores.

Orange County’s Newport Beach, often likened to the French Riviera is distinguished from other coastal towns by its scenic harbor and rich yachting history. Containing 7 islands and over 9,000 boats in its marina, its sailing history can be seen everywhere from the waterfront to its antique flavored shops and restaurants. Set in the modern business center of Orange County, Newport Beach is also a busy economic district which offers many opportunities for the career-minded, as well as wonderful restaurants and a great nightlife.



San Diego



La Jolla



Pacific Beach



Newport Beach



Las Vegas Campus - The University's primary administrative and academic offices are located on its Main Campus at 123 Camino de la Reina, Suite 100 East, San Diego, CA, 92108. An additional location of the University in Nevada is located at 3100 W. Sahara Avenue, Suite 108, Las Vegas, NV 89102.

The Las Vegas campus is conveniently located just minutes from the world-famous Las Vegas Strip at the intersection of West Sahara Avenue and Richfield Avenue. A bus stop is easily accessible in front of the school to connect students with Las Vegas' main source of public transportation. This Additional Location includes administrative offices, library, conference room, student lounge, and classrooms.

This site is staffed with instructors and administrators who can assist students with all of their needs, and offers plentiful free on-site parking, as well as conveniently located bus service. Prospective and enrolled students are invited to stop by and visit all of SSU's campus locations. Regular office hours are 9:00 am – 6:00 pm., Pacific Standard Time, Monday through Friday.



SSU ENGLISH PROGRAMS

Intensive English

- 3 hour core and 1.5 hour topic class per day
- Monday through Thursday
- Early Morning Session (7:30AM-12:00PM) *
- Morning Session (9:00AM-1:30PM)
- Afternoon Session (12:00PM-4:30PM) *
- Mid Afternoon Session (2:00PM-6:30PM) *
- Evening Session (4:30PM-9:00PM) *
- ABSD (Fashion Valley Campus Only) (7:30AM – 12:00 PM) *
- ABSD (Fashion Valley Campus Only) (12:00 PM– 4:30 PM) *

TOEFL Preparation

- 3 hour TOEFL and 1.5 hour topic class per day or
- 3 hour core class and 1.5 hour TOEFL class
- Monday through Thursday



Accent Reduction/Pronunciation

2 Hour Elective Class

ABSD - Advanced Business Skills Development:

The Quarter Term:

Although new students may start classes on any Monday of the year, our courses consist of two 13 week terms, giving students the time to study topics in detail. At the end of each course students are tested, given a final grade, and are required to move up to a more difficult level if appropriate. Students may not begin classes in weeks 12 and 13 of the quarter, except with written permission.

The 6 Level System:

Students are placed in one of six skill levels, from Beginning to Advanced to ABSD (Advanced Business Skills Development), depending on their individual abilities. Advanced students also have the choice of taking a TOEFL preparation class as their “core class”.

The Class Content:

“Core classes” focus on mastering the skills of reading, writing, listening, and speaking as well as understanding the language systems like grammar and vocabulary. Courses often incorporate real world materials like newspapers and magazines, video and internet content, guest speakers and field trips to help students with practical, everyday English communications.

“**Topic classes**” focus on improving conversational skills and giving students the chance to apply what they have learned in their core class. A variety of topic classes are available, including **Presentation Skills, Travel English, Idiom and Slang Vocabulary, Business English, American Culture, English for Professionals** and many others.

* Classes may require a minimum of 8 students.

* Check campuses for the Elective Accent Reduction/Pronunciation Class available hours.

* Check campuses for availability of each individual program.

OPTIONAL SERVICES

AIRPORT TRANSPORTATION

Southern States University offers airport transportation from local airports to the student's accommodation. Please notify school officials at least two weeks prior to your arrival time to allow for necessary preparation. The cost of airport transportation varies between \$50 and \$200, depending on the time of the flight, the number of people to be transported, and the distance to the student's accommodation.

Once you receive your visa and are making your travel plans, please contact your SSU contact person to make a formal reservation.

ACCOMMODATIONS

Once you receive your student visa, Southern States University can assist you with your living arrangements. Accommodation options include short and long-term housing, such as a hotel or an apartment, home-stay (living in a family environment, including breakfast and dinner), or a shared room with another student in a "student hotel". The cost and availability of housing varies by location, so please contact your campus of interest for details. Please visit our <http://www.ssu.edu/resources/accommodations/> to see current suggestions on securing accommodations. If you need further assistance, please contact your campus of choice.

NOTE: Students are responsible for their own transportation to and from school each day.

HEALTH INSURANCE

SSU strongly encourages all international students to purchase health insurance. Get a Free Student/Scholar Insurance Quote at: https://purchase.imglobal.com/Quote/patriot_exchange/pre-quote?imgac=524866



APPLICATION PROCESS & PROCEDURES

All non-U.S. residents are required to apply to an educational institution and obtain USCIS Form I-20 from the school, before receiving a student visa. The following steps are required for a non-immigrant, full-time student to study at Southern States University:

- 1) Complete the *SSU Enrollment Agreement*.
- 2) Provide a copy of a bank statement from either a checking or savings account, showing a minimum balance as shown on the Affidavit of Financial Support. For each dependent add an additional \$900. The statement must be in English and show the bank name on official bank letter head, account opened date, account holder name, monetary balance, account number, and the date the statement was created. The statement cannot be more than 12 weeks old when submitted.
- 3) Complete the Affidavit of Financial Support, identifying the source of funds to support the student as they study in the US (students with an F-1 visa are not permitted to work). The sponsor will be the account holder of the bank statement, and will sign the affidavit. The student may be his/her own sponsor. This statement promises that the sponsor will provide financial support for the student for the duration of their studies in the US, and is required by the United States Immigration authorities.
- 4) Submit the US \$100 application fee, US \$85 courier fee, and US \$150 International Registration Fee.
- 5) Provide a copy of the student's *passport ID page*.
- 6) Provide a clear copy of high school diploma or transcripts (*no translation needed*).
- 7) Review the current SSU General Catalog found at www.ssu.edu/academics/general-catalogs/ and sign the Catalog Acknowledgement form.
- 8) Make a visa interview appointment. After the above requirements have been met, SSU will mail the I-20 by express courier to the student within 2 weeks along with an acceptance letter. After receiving his/her I-20, the student will contact the US embassy or consulate and schedule a visa interview appointment. This can be done through the US Embassy website at www.usembassy.gov.
- 9) USCIS charges a "SEVIS fee" of US \$200 (a processing fee paid directly to the Department of Homeland Security). Students can pay by credit card at www.fmjfee.com. This fee must be paid prior to the student's visa interview. The student will then be prompted to print a receipt immediately (Form I-901). Please make the payment well in advance of the interview to avoid any problems.
- 10) Attend the visa interview. Arrive early and do not bring children with you. Bring the following documents to the visa interview: your passport, Form I-20, Form I-901, the SSU Acceptance Letter, and a bank statement showing sufficient funds to support you during your studies in the US. It will take approximately 30 days for the embassy to process the visa after the interview. Please allow enough time to prepare properly for the interview.
- 11) If all documents are not provided at the interview, the visa will be denied. You will then have to reapply, and pay additional fees to obtain a new I-20 from SSU. With a visa approval, students will be charged a



\$250 International Enrollment Fee. In the case of a visa denial, the \$100 Application Fee and \$150 International Registration Fee will not be refunded to the student, because these fees cover the costs involved in preparing the documentation. With a visa approval, students will be charged a \$250 International Enrollment Fee.

- 12)** Arrange transportation and housing. After you receive your F-1 visa, arrange for your flight and your accommodations. Students may enter the US a maximum of 30 days before the start date listed on the I-20. Please be prepared to show your passport, I-20, a completed I-94 (received on the airplane), the Customs Declaration Form, I-901, SSU contact information, and a bank statement to the Customs and Border Protection Officer at the airport.
- 13)** Arrive in beautiful Southern California or Nevada and begin your study abroad experience! Please inform your SSU campus of your presence within 24 hours of your arrival or your I-20 may be cancelled.

Please be aware that processing times at SSU and the American Embassy or Consulate may vary. When choosing a start date on the SSU Application Form, please allow enough time to complete this entire process and arrive at school before the start date you select. If you arrive at the airport after the start date listed on your I-20 Form, you *may be refused entry* into the US and forced to return home.



CONTACT INFORMATION

English Program Administration

San Diego Campus (Fashion Valley)

123 Camino de la Reina Suite 100 East
San Diego, CA 92108

Phone: (619) 298-1829 Fax: (619) 704-0175

Marlyssa Ebel – Intensive English Program Administrative Assistant

mebel@ssu.edu

San Diego Campus (La Jolla)

3252 Holiday Court Suite 116

La Jolla, CA 92037

Phone: (858) 453-8185 Fax: (619) 704-3977

Wendy Du - Site Director

wdu@ssu.edu

San Diego Campus (Pacific Beach)

919 Garnet Ave Suite 216, San Diego, CA 92109

Phone: (858) 581-3969 Fax: (619) 704-0175

Michael Morshed – Intensive English Program Head Teacher

mmorshed@ssu.edu

Newport Beach Campus

1601 Dove Street Suite 105

Newport Beach, CA 92660

Phone: (949) 833-8868 Fax: (619) 704-0070

Beate Berg - Site Director

bberg@ssu.edu

Las Vegas Campus

3100 West Sahara Ave Suite 108

Las Vegas, NV 89102

Phone: (702) 383-4088

Campus Director

info@ssu.edu